

Navigation test manual

This manual contains information about the task assessment and the various subtasks within the navigation test.

For scientific substantiation, please refer to the “Scientific foundations” tab within the test environment.

Content

| | |
|------------------------------|---|
| Goal..... | 2 |
| Administration..... | 2 |
| Subtasks..... | 3 |
| Subtasks in perspective..... | 4 |
| Navigation profile..... | 4 |
| Training indication | 5 |

Goal

The navigation test helps to assess which aspects of navigational ability are less effective and which remain intact. The test provides a profile in which the test scores are compared with those of a reference group.

Administration

- ☐ Complete the demographic information (together with the participant)

Disclaimer

Would you like to select 'other' for gender? In the original research, this group was too small and too diverse to draw reliable conclusions. Therefore, we can compare your results with existing group averages, although these may not always perfectly reflect your situation. However, your scores can be compared with those of men or women (decide together). Your clinician will discuss with you what the results mean for you personally.

- ☐ Select the desired tasks (Wayfinder Questionnaire and/or Leiden Navigation Test; the remainder of the manual only focuses on the navigation test)
- ☐ Announce the navigation test
 - Go through the instructions verbally with the participant and check their understanding
 - Switch the screen to full-screen mode (F11)
- ☐ Start navigation test
 - Show the video (with sound)
- ☐ The participant answers the questions on the computer; verbal guidance during the questions may sometimes be helpful; ask the participant whether they would like this.
- ☐ End of navigation test
 - Turn away the screen
- ☐ Discussion
 - Ask how the test was experienced
 - Can the participant give examples of what they found difficult and what they found easier?
 - Discuss the test profile
 - Check whether the participant recognizes this
 - Export the profile (image) for administration
 - Export the scores (.csv) for administration

Subtasks

The task consist of five subtasks; these are:

1. Landmark recognition
2. Locations: Egocentric
3. Locations: Allocentric
4. Path: Route
5. Path: Survey

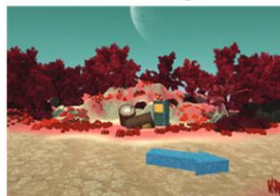
These subtasks assess the subprocesses on which navigational skills are based.

1. Landmark recognition



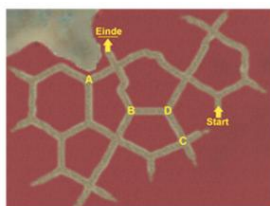
Do you recognize this object?
Yes/No

2. Locations: egocentric



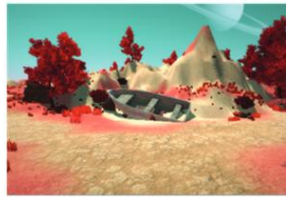
Which of these six arrows points exactly to the end point of the route?

3. Locations: allocentric



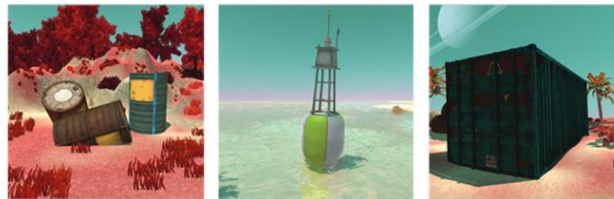
What is the location of landmark x on the map?

4. Path: Route



In which direction did you continue?

5. Path: Survey



Which two of these three objects were closest together as the crow flies?

Subtasks in perspective

Subtasks 2 and 4 assess navigational skills from a first-person perspective (egocentric). Subtasks 3 and 5 assess navigational skills from a bird's-eye perspective (allocentric). Subtask 1 evaluates the ability to use objects in the environment as landmarks.

Navigation profile

The subtasks together form a navigation profile, providing an overview of which subdomains of navigational skills are more or less developed. The participant's test scores are compared with the appropriate normative group (based on age and gender, and education where applicable). A z-score is calculated to indicate how the participant performs relative to the normative group. These z-scores are labelled according to the descriptive norms outlined in the monodisciplinary guideline '*Descriptieve labels: Uniformiteit in de kwalitatieve beschrijving van scores op prestatietaken (2025)*' published by the Netherlands Institute of Psychologists.

Training indication

Based on the navigation profile, the software indicates which training is best suited to the individual participant. The software performs this calculation automatically. The determination is made according to the following steps:

